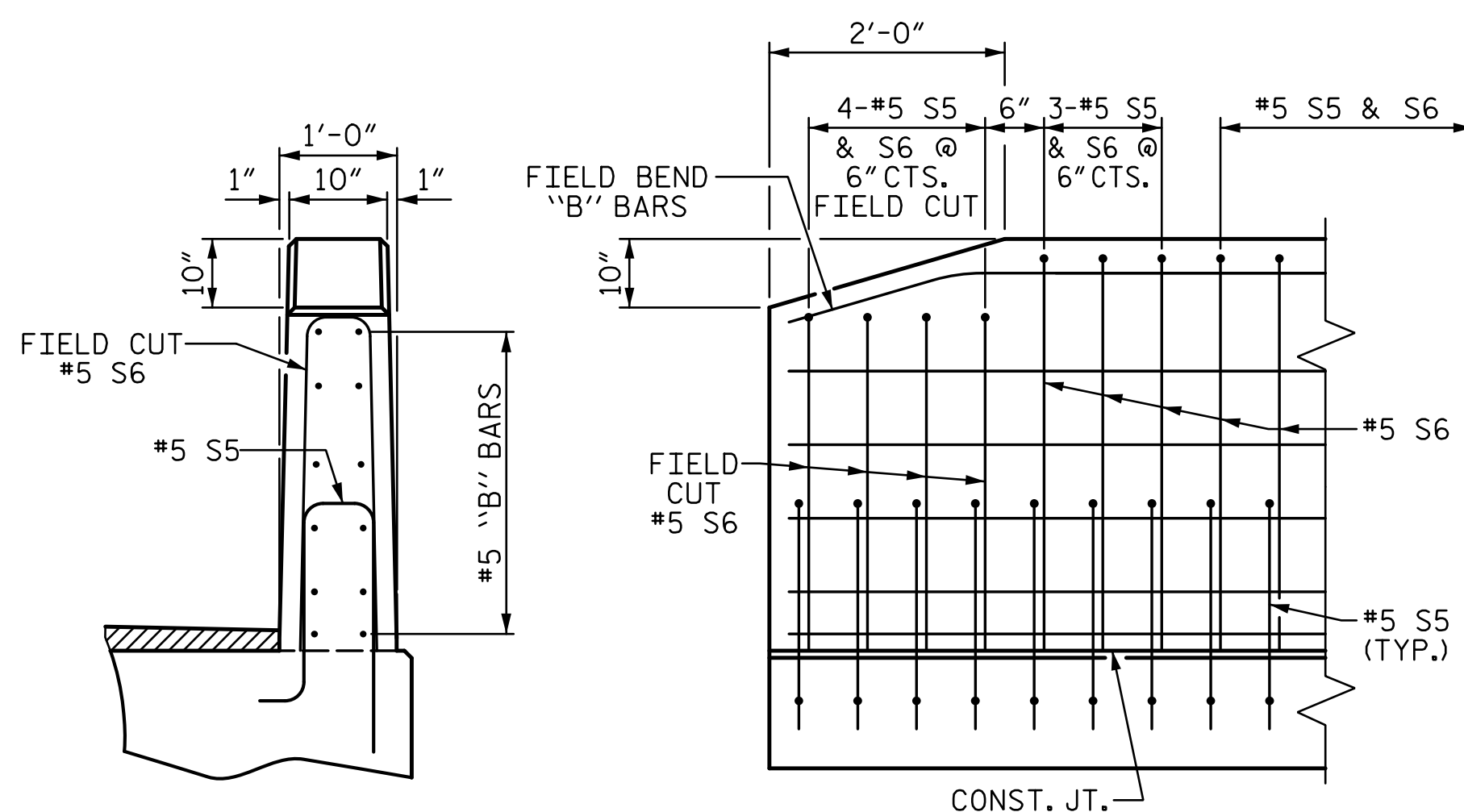


FIXED END  
( TYPE II - 36 REQ' D )

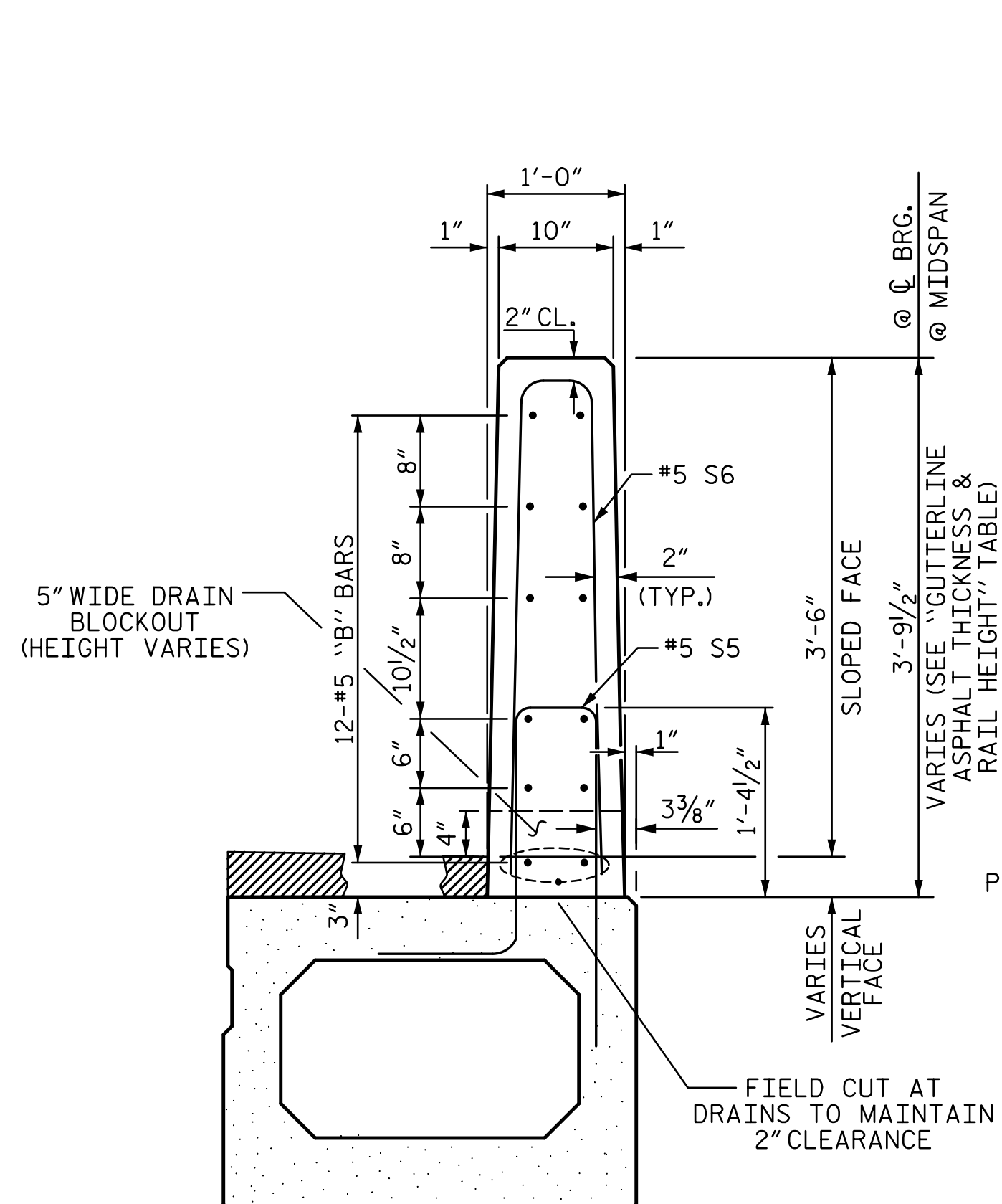


END VIEW

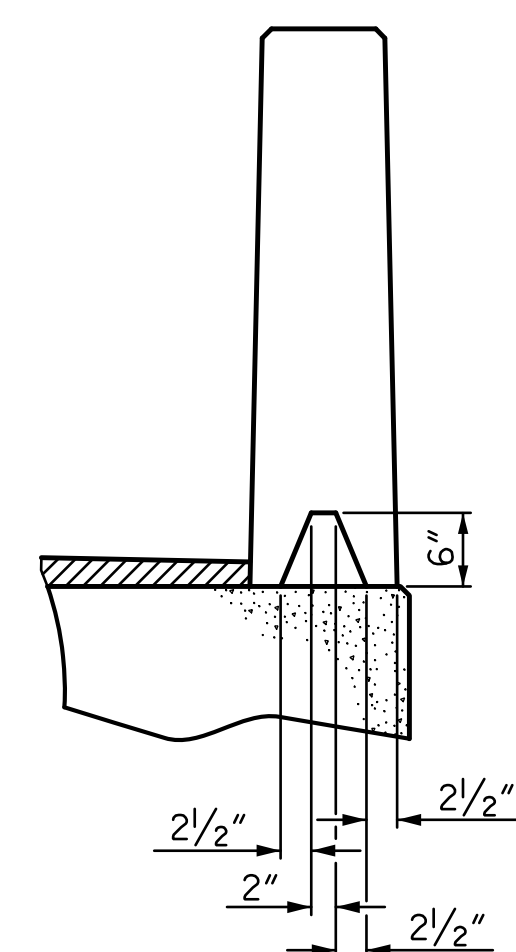
SIDE VIEW

## ELASTOMERIC BEARING DETAILS

ELASTOMER IN ALL BEARINGS SHALL BE 60 DUROMETER HARDNESS.



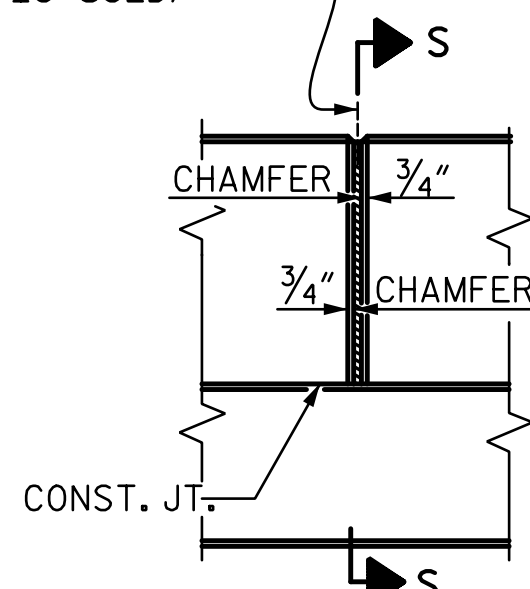
SECTION THRU RAIL



SECTION S-S

AT DAM IN OPEN JOINT  
(THIS IS TO BE USED ONLY  
WHEN SLIP FORM IS USED)

④ 1/2" EXP. JT. MAT'L HELD IN  
PLACE WITH GALVANIZED NAILS.  
(NOTE: OMIT EXP. JT. MAT'L. —  
WHEN SLIP FORM IS USED)

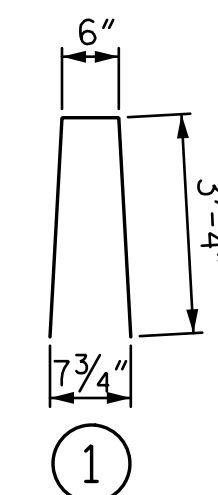


### ELEVATION AT EXPANSION JOINTS

## VERTICAL CONCRETE BARRIER RAIL DETAILS

BOX BEAM UNITS REQUIRED			
	NUMBER	LENGTH	TOTAL LENGTH
EXTERIOR B.B.	2	40'-0"	80'-0"
INTERIOR B.B.	7	40'-0"	280'-0"
TOTAL	9	—	360'-0"

BOX BEAM UNITS REQUIRED			
	NUMBER	LENGTH	TOTAL LENGTH
EXTERIOR B.B.	2	90'-0"	180'-0"
INTERIOR B.B.	7	90'-0"	630'-0"
TOTAL	9	—	810'-0"



BAR TYPE

BAR DIMENSIONS ARE OUT TO OUT

BILL OF MATERIAL FOR VERTICAL CONCRETE BARRIER RAIL					
BAR	BARS PER PAIR OF EXTERIOR UNITS 40' UNIT	SIZE	TYPE	LENGTH	WEIGHT
* B7	48	#5	STR	19'-8"	985
* S6	126	#5	1	7'-2"	942
*EPOXY COATED REINFORCING STEEL			LBS.		1927
CLASS AA CONCRETE			CU.YDS.		10.4
TOTAL VERTICAL CONCRETE BARRIER RAIL			LN. FT.		80.0

BILL OF MATERIAL FOR VERTICAL CONCRETE BARRIER RAIL					
BAR	BARS PER PAIR OF EXTERIOR UNITS 90' UNIT	SIZE	TYPE	LENGTH	WEIGHT
*B10	96	#5	STR	22'-1"	2211
*S6	252	#5	1	7'-2"	1884
*EPOXY COATED REINFORCING STEEL			LBS.		4095
CLASS AA CONCRETE			CU.YDS.		23.3
TOTAL VERTICAL CONCRETE BARRIER RAIL			LN. FT.		180.0

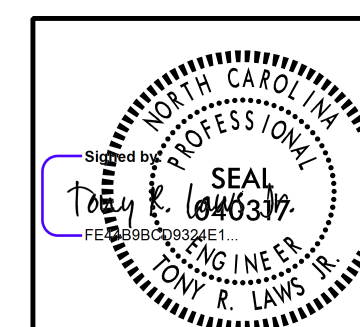
GUTTERLINE ASPHALT THICKNESS & RAIL HEIGHT		
	ASPHALT OVERLAY THICKNESS @ MID-SPAN	RAIL HEIGHT @ MID-SPAN
40' UNITS	3¾"	3'-9¾"
90' UNITS	1½"	3'-7½"

PROJECT NO. DF18314.2075090

POLK COUNTY

STATION: 12+15.00 -L-

SHEET 7 OF 7



10/7/2025

**RS&H**

RS&amp;H Architects-Engineers-Planners, Inc.

**8521 Six Forks Road, Suite 400**  
**Raleigh, NC 27615**  
**919-926-4100 FAX 919-846-9080**  
**www.rsandh.com**  
North Carolina License Nos. 50073 \* F-0493 \* C-21

STATE OF NORTH CAROLINA  
DEPARTMENT OF TRANSPORTATION  
RALEIGH

3'-0" X 2'-9"  
PRESTRESSED CONCRETE  
BOX BEAM UNIT

c.	REVISIONS						SHEET NO.  S-13
	NO.	BY:	DATE:	NO.	BY:	DATE:	
	1			3			
	2			4			
							TOTAL SHEETS 24

DRAWN BY : T. R. LAWS DATE : 02/2025  
 CHECKED BY : V. SELLERS DATE : 02/2025  
 DESIGN ENGINEER OF RECORD: T. R. LAWS DATE : 10/2025

DOCUMENT NOT CONSIDERED  
FINAL UNLESS ALL  
SIGNATURES COMPLETED